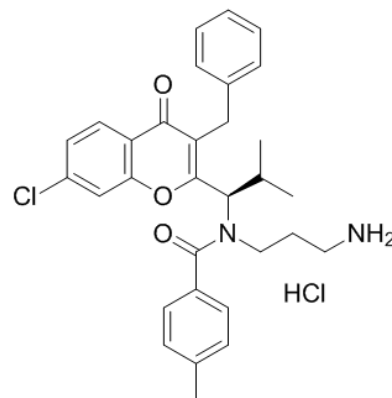


**Product Name** : SB-743921  
**Cat. No.** : PC-42882  
**CAS No.** : 940929-33-9  
**Molecular Formula** : C<sub>31</sub>H<sub>34</sub>Cl<sub>2</sub>N<sub>2</sub>O<sub>3</sub>  
**Molecular Weight** : 553.5193  
**Target** : Kinesin  
**Solubility** : 10 mM in DMSO



## Biological Activity

SB-743921 (SB-743921) is a potent, selective **kinesin spindle protein** (KSP) inhibitor with Ki of 0.1 nM, shows no activity against MKLP1, Kin2, Kif1A, Kif15, KHC, Kif4 and CENP-E.

SB-743921 also shows high affinity for mouse KSP with Ki of 0.12 nM.

SB-743921 blocks assembly of a functional mitotic spindle, thereby causing cell cycle arrest in mitosis and subsequent cell death in cancer cells, demonstrates improved potency over ispinesib in both biochemical and cellular assays.

SB-743921 shows a broad spectrum of tumor inhibition in multiple cancer models.

## References

Good JA, et al. *J Med Chem*. 2013 Mar 14;56(5):1878-93.

Holen KD, et al. *Cancer Chemother Pharmacol*. 2011 Feb;67(2):447-54.

Zhu L, et al. *Anticancer Drugs*. 2016 Oct;27(9):863-72.

Talapatra SK, et al. *J Med Chem*. 2013 Aug 22;56(16):6317-29.

**Caution: Product has not been fully validated for medical applications. Lab Use Only!**

E-mail: tech@probechem.com